

# DSE-Aluprinter

ANODISED ALUMINIUM PRINTER

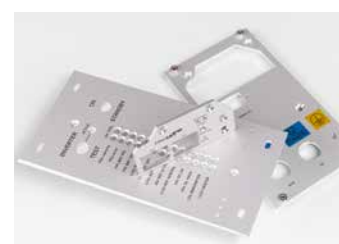
# Model DSE-100 Aluprinter



Polychromal



The DSE-series technology offers great flexibility, especially when working with small production runs, single pieces and unique signs.



The benchmark printer for printing in anodised aluminium

## Polychromal, DSE-100 Aluprinter

# DSE-Aluprinter

ANODISED ALUMINIUM PRINTER



The DSE-100 is a proven midrange flat-bed inkjet printer that can print directly in anodised aluminium sheets with superb scratch resistance due to sub surface printing. Using the Polychromal DuraColour inks, you can print ultra-sharp long lasting images and graphical symbols.

Other printers in the series:

DSE-60: 562,5 × 650 mm max. print area

DSE-200: 2000 × 1000 mm max. print area

### TECHNICAL SPECIFICATIONS PRINTER

Model:	DSE-100
Printing technology:	Ink-jet (Piezo Head)
Printing size:	Max print area 1000 mm x 1000 mm, max height 290 mm
Printing resolution:	1440x1440 dpi    1000 x 650    uni 60 min    bi 46 min 1440x720 dpi    1000 x 650    uni 40 min    bi 28 min 720x720 dpi    1000 x 650    uni 34 min    bi 20 min
IMS:	Ink management system, stirring and circulating ink inside the ink bottles and tubes
Ink containers:	Refillable bottles (8x)
Drying device:	Integrated drying device to allow drying at low table/bed temperatures
IME:	Integrated Ink Mist Extraction system
Vacuum pump:	Integrated low maintenance, low noise vacuum pumps (2x)
Interface:	LAN network/USB
Weight:	420 kg (uncrated)
Table/bed:	Heated and with vacuum (2 sections)
Installation space:	9 m <sup>2</sup> or more (3x3m <sup>2</sup> )
Floor loading capability:	450 kgf/m <sup>2</sup> or more
Power requirements:	AC 200-240 V ± 10% 50/60 Hz ± 1Hz, 15Amp
Compressed air requirements:	(Freeze) dried compressed air, 6-10 Bar pressure, consumption appr. 60 l/min at 2,5 bar (only when printing)
Capacity:	Recommended power fuse 16A
RIP software:	Kothari Print Pro



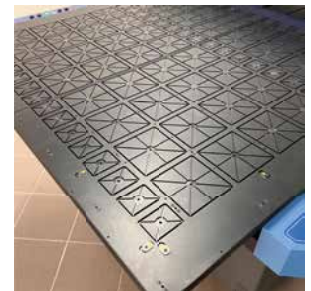
IMS-System



Drying- and vacuum controls



Easy access to printer parts



2 section heated vacuum table